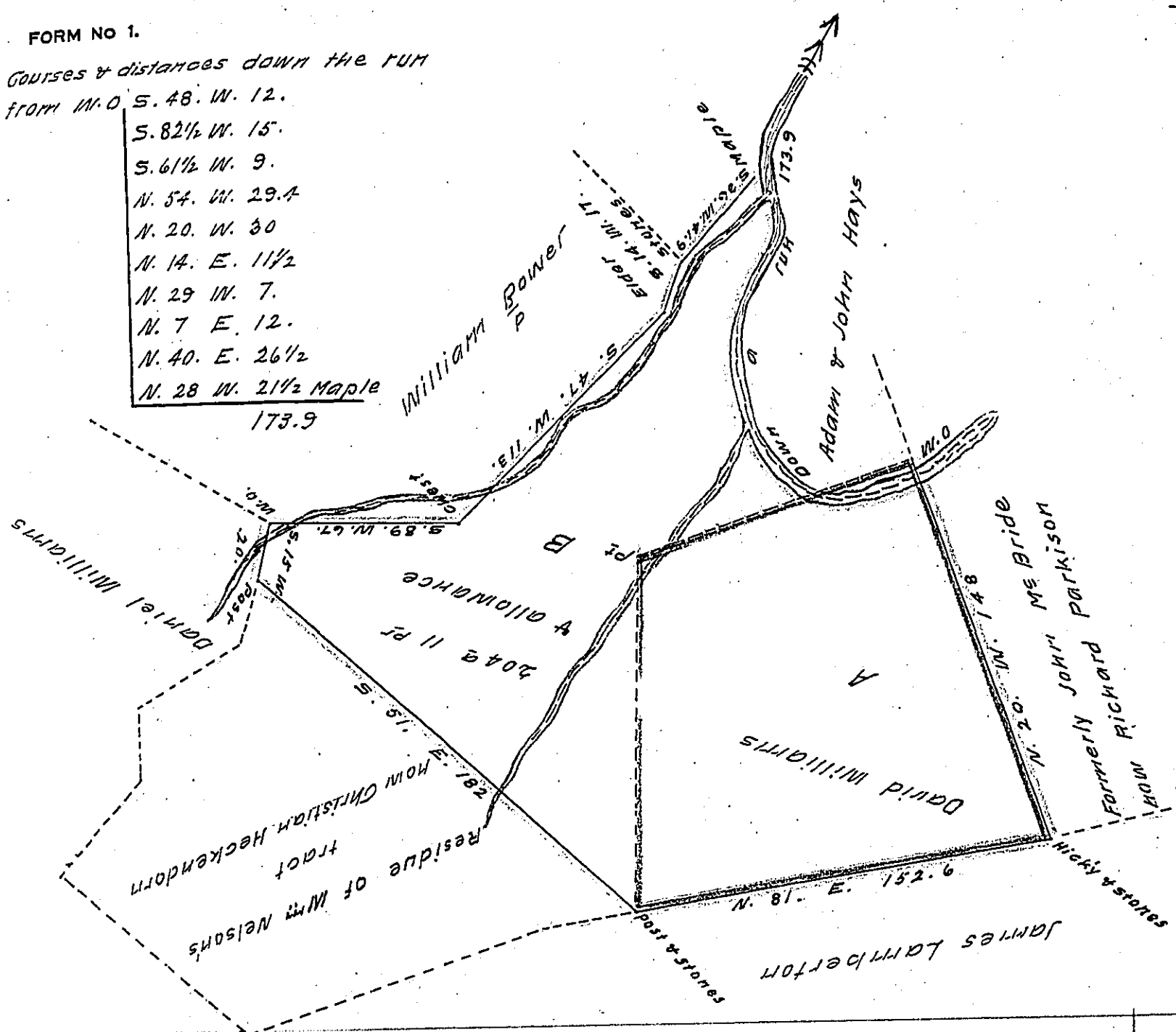


FORM NO 1.

Courses & distances down the run
from M.O.S. 48. W. 12.

- S. 82 1/2 W. 15.
- S. 61 1/2 W. 9.
- N. 54. W. 29.4
- N. 20. W. 30
- N. 14. E. 11 1/2
- N. 29 W. 7.
- N. 7 E. 12.
- N. 40. E. 26 1/2
- N. 28 W. 21 1/2 Maple



The yellow lines describe a tract of land situate in Tycome Township Perry County and contains two hundred and four acres eleven perches & allowance of six per cent for roads &c. Surveyed March the 28th 1827. In pursuance of a warrant granted David Williams for 100^a dated the 8th day of September 1755

Pr. Wm. Wilson, D.S.

Gabriel Hiester, Esq. S.S.

Note. The part marked A contains 100^a 4^{pc} surveyed on a warrant granted to John Nelson, dated September the 11th 1787. B is part of a tract surveyed October 16th 1793 on a warrant granted Wm. Nelson for 200^a dobltd September the 11th 1787 and is ^{both} hom. _{owned} by Christian Heckendorn

G. H. Nelson, Paid W. W.

IN TESTIMONY that the above is a copy of the original remaining on file in the Department of Internal Affairs of Pennsylvania, made conformably to an Act of Assembly approved the 16th day of February, 1833, I have hereunto set my Hand and caused the Seal of said Department to be affixed at Harrisburg, this second day of September 1908

Henry Abner
Secretary of Internal Affairs.